

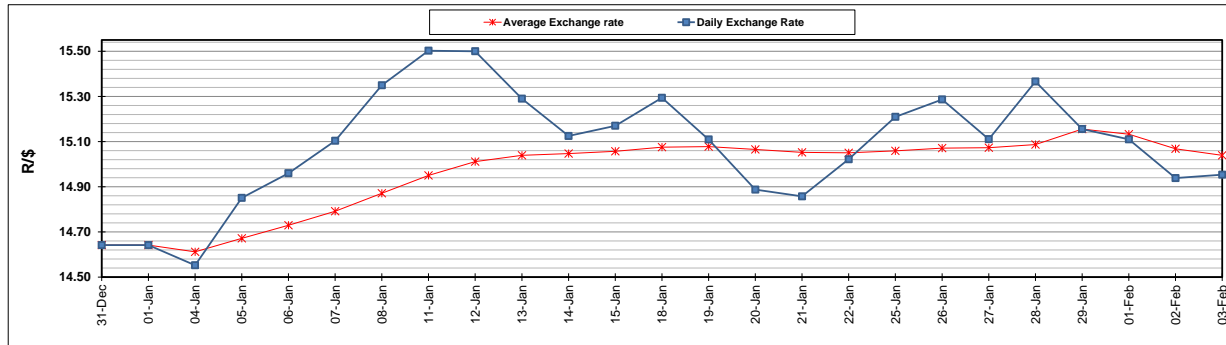
	PETROL 95 ULP	PETROL 93 ULP & LRP	DIESEL 0.05%	DIESEL 0.005%	ILL. PAR.
GAUTENG PUMP PRICE (SA c/l) AS FROM 03/02/2021	1,567.000	1,550.000	-	-	-
WHOLESALE PRICE (SA c/l) AS FROM 03/02/2021	-	-	1,358.420	1,360.820	798.688
SINGLE NATIONAL MAXIMUM RETAIL PRICE	-	-	-	-	1,008.000
BASIC FUEL PRICE - 03/02/2021 (SA c/l)	634.239	625.315	623.682	627.404	605.224
PRESS RELEASE CONTRIBUTION TO BFP 03/02/2021 - 03/02/2021 (SA c/l)	600.170	593.170	599.630	602.030	586.128
UNIT OVER/(UNDER) RECOVERY - 03/02/2021 (SA c/l)	(34.069)	(32.145)	(24.052)	(25.374)	(19.096)
AVERAGE BASIC FUEL PRICE 29/01/2021 - 03/02/2021	617.495	609.272	608.514	612.364	591.677
AVERAGE UNIT OVER/(UNDER) RECOVERY 29/01/2021 - 03/02/2021	(78.075)	(76.852)	(52.384)	(54.584)	(49.799)

### ANALYSIS MOVEMENT OF AVERAGE OVER/(UNDER) RECOVERY

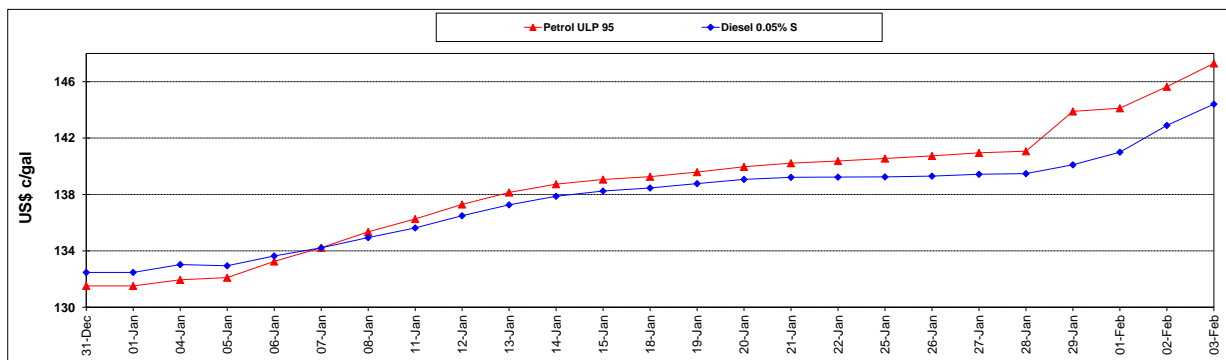
	PETROL 95	PETROL 93	DIESEL 0.05%	DIESEL 0.005%	ILL. PAR.
- MOVEMENT IN INTERNATIONAL PRODUCT PRICES	(80.038)	(78.788)	(54.318)	(56.530)	(51.680)
- MOVEMENT IN EXCHANGE RATE	1.963	1.936	1.934	1.946	1.881
AVERAGE UNIT OVER/(UNDER) RECOVERY 29/01/2021 - 03/02/2021	(78.075)	(76.852)	(52.384)	(54.584)	(49.799)

### R/\$ EXCHANGE RATE - (R/\$14.9535 - 03/02/2021)

#### EXCHANGE RATE USED IN BASIC FUEL PRICE



#### INTERNATIONAL PRODUCT PRICES OF BASKET USED IN BASIC FUEL PRICE



#### BASIC FUEL PRICE IN SA CENTS PER LITRE

